

COMPANY PROFILE



Kvaliteta
Systems & Solutions

“You Dream IT We Deliver IT”

Purpose & Values



Vision

- › To be a leader in enabling the journey to the next generation Process Applications



Mission

- › Become the Quality and Preferred Service Delivery Partner for our customers
- › Become one of the best place to work for, nurture the Talents, and give people an opportunity to grow and develop
- › Believe in success and success is ultimately dependent on the well-being of our customers and employees

Values

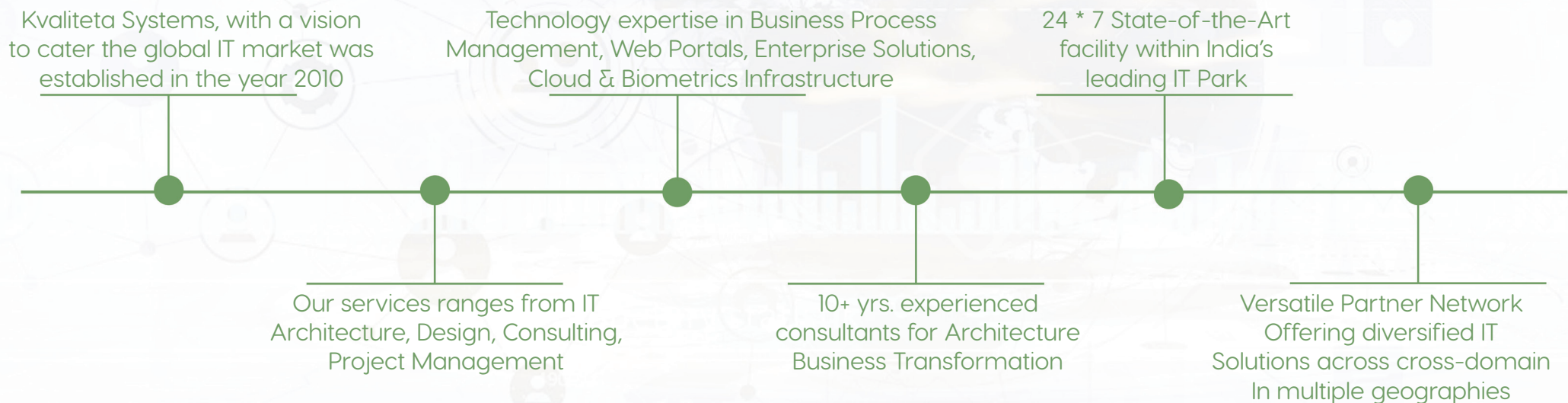
- › Result-oriented
- › Consultative
- › Collaborative
- › Process Driven
- › Agile
- › Sustainable
- › Innovative
- › Execution Excellence
- › Integrity
- › Work-Life Balance

Founded in 2010 with a vision to transform the Application Development and the Delivery Model, with a focus on Process Centric Applications. Our aim is to change the way people engage and collaborate with business applications. Our solutions are targeted towards organisations who want to deploy, interface or migrate to “Engagement Centric” Applications from “Record Centric” Applications.

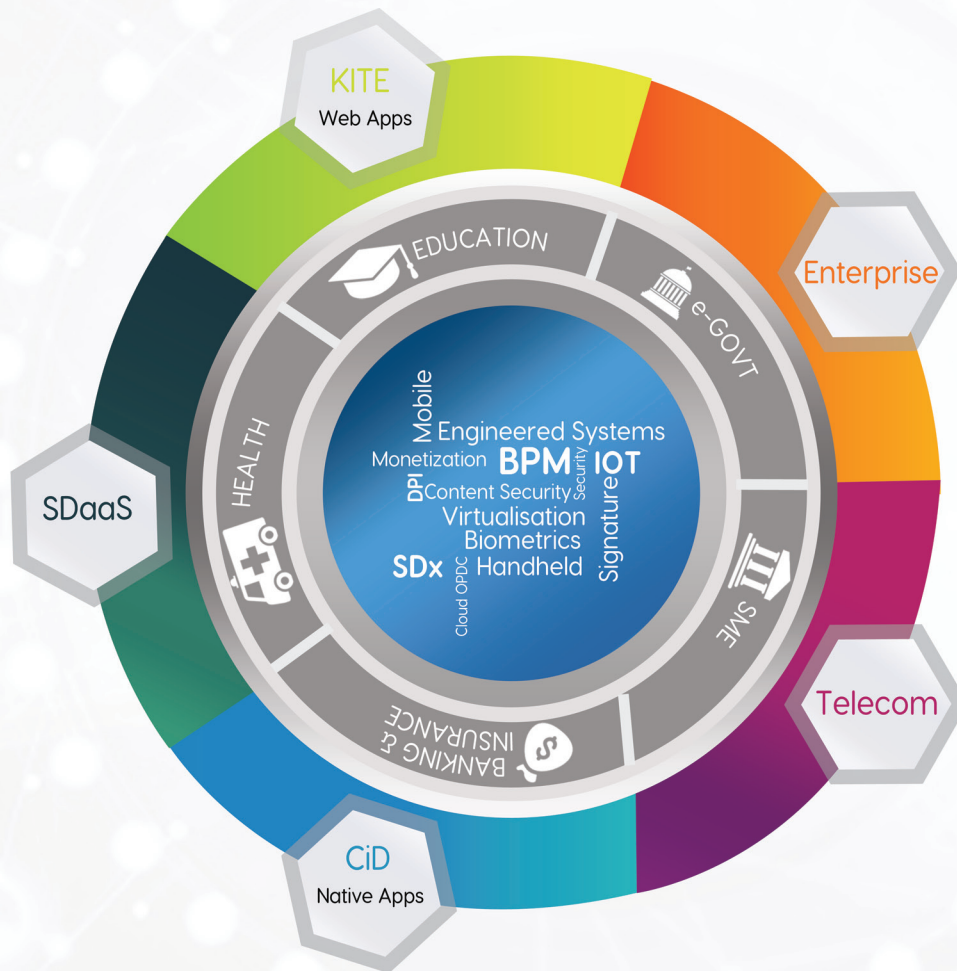
Our founders have more than 20 years of experience in “IT for Business Outcomes” and our IT knowledge is spread across Collaboration Platforms, Information Capture technologies, BPM Tools, Data & Analytics and Infrastructure, laying the foundation for Cloud Native Apps and building the pillars for Smart Business Applications.

Our Aim: To pioneer a platform with pre-integrated software components, which can help customers achieve their goals of “Smart Process Applications” by improving collaboration, automating business processes in the front line, while retaining the structured, predefined business processes in back office

Over the years we have gained a vast experience in delivering IT Solutions, Domain Expertise, Technical Excellence and understanding of working with diverse cultures. Today we are able to help businesses who want to be agile and future-ready.



Technology Offering



SDaaS

- Smart Process Applications (SPA), BPM Tools , BRE, BAM
- Robotic Process Automation (RPA), Core Programming, ML, AI & NLP
- Liferay & SharePoint Portals, Web technologies, DB/ BI Tools, Analytics & Investigation Tools

KITE Framework

- BPM, Rules Engine and Business Activity Monitoring, Workflow
- Enterprise Content Management
- Built with .NET Framework, J2EE Framework

CiD Framework

- Automated Data, Biometric Capture
- e-KYC and Biometric Verification
- Capture, Identification, Deduplication
- Access Control, Campus Security, Counterfeit Prevention

Enterprise IT

- Management Tools, Cyber Security, DevOps Tools
- On-Premises Data Centers, Hybrid Cloud, Physical Security
- Site Reliability Engineering

SP - IT

- DPI, DDoS Protection, Network Endpoint Security
- Cell Sites, Wi-Fi, Hotspots, LTE, WiMAX and Off-Load solution
- Network Security
- SDN/NFX, Traffic Shaping, Intelligent Access, Unified Mobility, Monetization

Our solutions offerings are designed to touch all aspects of Process Automation journeys by using a combination of business and technology, in various industries for any type of organization.

Telecom

Design & development are critical for the implementation of future technology for Telecom systems. Offering software-defined networking solutions, Network functions virtualization, technical consultancy, expert manpower and training in NextGen communication technologies. Covering many telecom services including CPEs for Wired or Wireless networks; Kvaliteta can design, build & deliver solutions that are ready for deployment.

Banking

Digital transformation & integration leads to fundamental changes in how the business operates and delivers value to its customers. E-KYC & First mile automation is the step towards this transformation. Banks will see reduced costs and streamlined processes. This end-to-end integration SPA, RPA will help provide a more seamless, engaging customer experience.

Campus Security Management

Access Control management applications primarily developed to address the requirements of automated capture of information at high security complexes like airports, banks, schools, etc. Using e-KYC Biometric access and combined out applications for time and attendance, entry/exit or guard patrol are much simpler yet effective.

Government

E-Governance is not just a one-way service delivery over the Internet for electronic access to government information or electronic payments. Our solutions are designed & crafted to allow citizens to relate to the government, with access to information leading to better governance. We have developed a track record of providing IT consulting & developing IT applications for organizations that facilitate Government to Citizen (G2C), Citizen to Government (C2G), Government to Government (G2G), Government to Business (G2B) and Government to NGO (G2N) services.

Education

Instead of depending on old student information system intranet applications, our software architects have designed a portal solution which gives a modern approach to bring a collaborative environment in the field of education between the students, staff and faculty.

An integrated Portal helps to have a better student information system, admissions, enrollment, academics, alumni services, administration, manage classrooms, buildings and to provide eLearning/Interactive Learning.

Healthcare

Portal solutions designed for Health organization which connects patients with hospitals, pharmacies, and other health related services. It provides a collaborative environment for patients, Doctors, pharmacists, and other service providers in the presence of health organization.

We have enhanced features like track & trace for inbound/outbound services, and counterfeit management for pharmaceutical/medical products and tools.



Business Agility

- Incremental Implementation Approach
- E-Standardized Process Practice

Faster Time to Value

- Reduced Time to Market of Application

Best Feasible Solution

- Integrated end-to-end IT & Telecom solutions
- One-Stop Shop for every IT need

Lower TCO

- Solution Integration without vendor bias

Rapid Execution

- Long Presence Advantage
- Long Term Localized Commitment

Themes

For portfolio/product development, storyboards are a simple yet concise way to express business requirements. In an ideal world these stories are broken down as small as possible under one label, categorizing the dependencies, keeping them together. It's a harmonizing act. Assigning themes to the User Stories in a portfolio/product backlog helps to see them emerge, which will give extra clarity to the team and business about the Sprint Goals, as they impact partners, key activities, customer segments, revenue streams, and other portfolio business model elements.

Goals

Our methodology focuses on managing deliverables (the User Stories) and how they affect (from output to outcomes). The goals enable a team by changing the focus from creating the features the stakeholders want, to thrive in delivering the Objectives and Key Results agreed with them. It helps to prioritize and deliver pre-defined business results. We adopt leaner approaches in order to measure its impact and adjust accordingly.

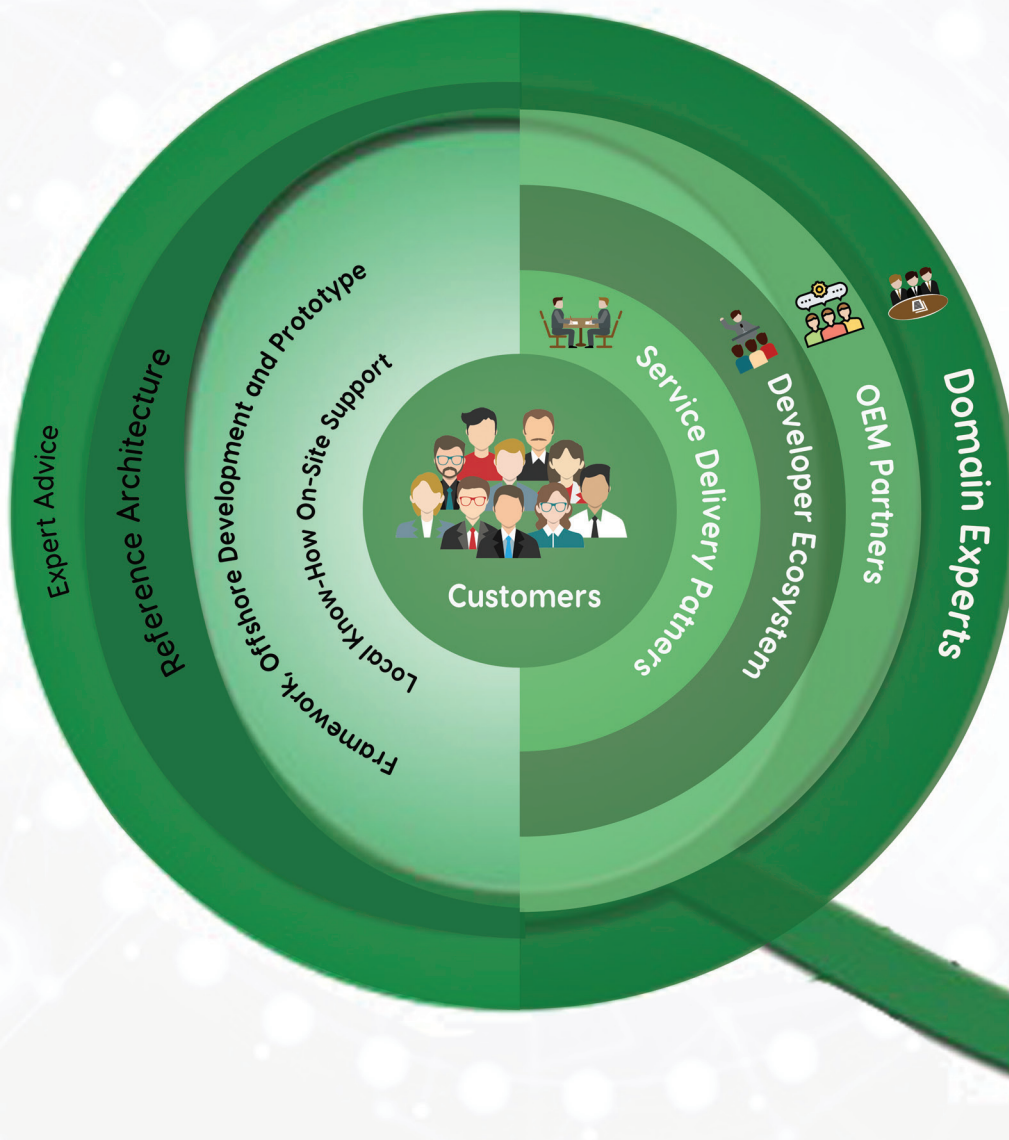
Metrics

Our metrics focus on the flow of value from technologies to the business. Metrics gives precise planning, predictable project management, and strong business understanding & insight discovery. It measures the gap between the project estimation and the actual time spent on a project. Quality & on-time delivery determines the success of the development. The measurement of the deviation from estimation helps deliver the best results by holding members accountable for their estimations. Metrics reveals market share, ROI, defect rate, and more, with the most prominent one to deliver valuable insights being the Terms of Quality.

Scaling

Our Implementation Methodology empowers complex problem to achieve the benefits of Lean-Agile software and systems development at scale. It sustains and drives faster time-to-market, dramatic increases in productivity and quality, and improvement in team engagement. Designed for continuous and more efficiently delivery on a regular and predictable schedule. It provides a knowledge base to support greater alignment and visibility across the organization, connecting the business strategy to execution, enabling better business results, faster, and with a higher degree of predictability and quality.

Partnership Model



Our model offers a “Business friendly” approach, which entails working with the clients’ business teams and Industry Experts, to ensure our offering suits the Business & Technology needs of our Clients.

Our Strategy: Working with communities and partners across the globe to develop, implement & institutionalized universal coverage initiatives, globally strengthening & improving connectivity.

“Growing with our partners”

We focus deeply in understanding the client's business, to be in front of their needs.. Our aim is to deliver optimized IT solutions - from the project initiation, implementation, continuous integration, to the final delivery and post implementation support. Our team operates with enthusiasm and flexibility.

Our Business Framework provides an all-in-one integrated approach through which you can run your entire business, covering all business operations through automation, it's services and training the resources. This requires various actors like Business Development Executives, Delivery Teams, Technical Expertise Consultants & Partners, and it is achievable only through the profitability through our Partnership Model.

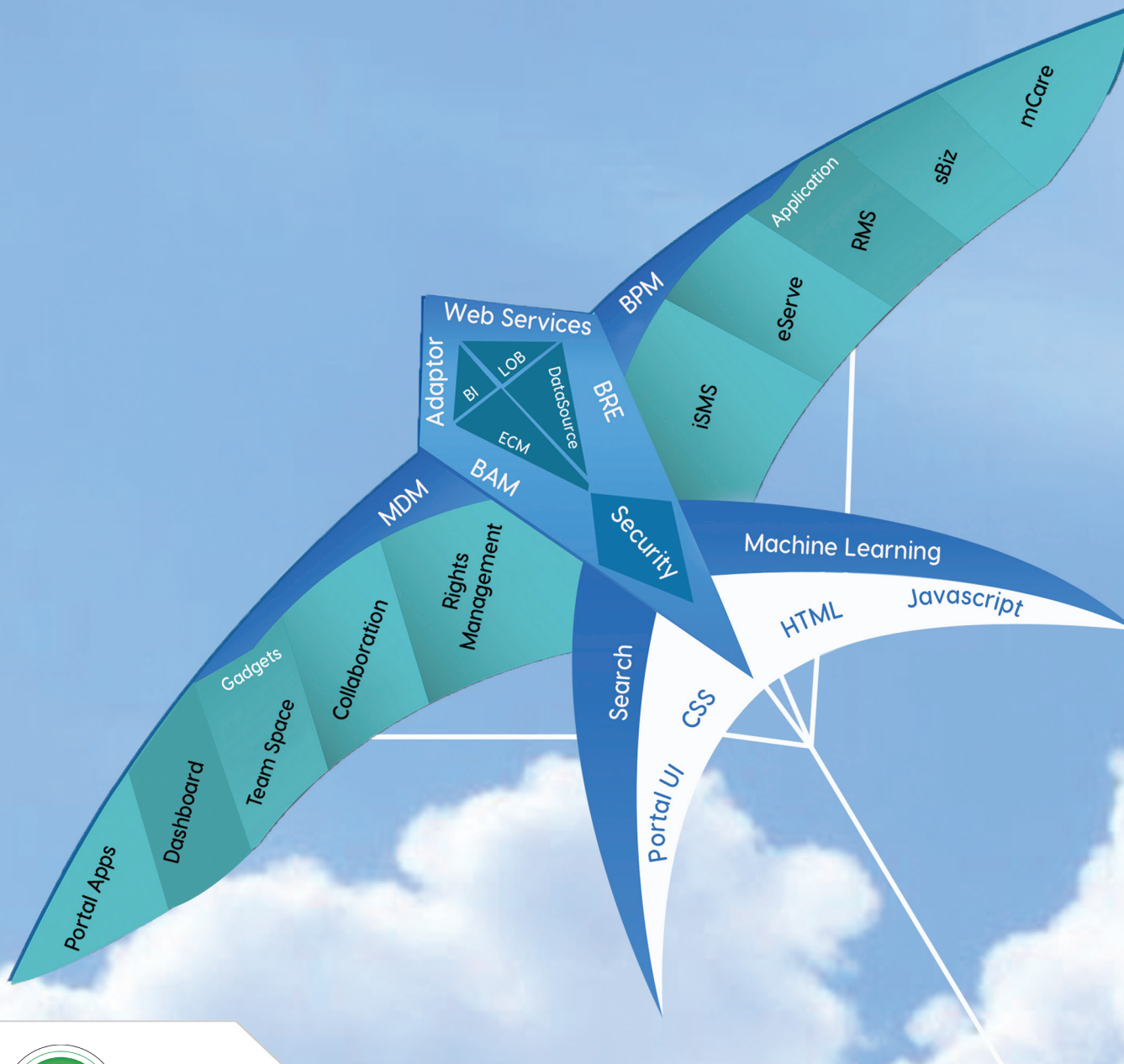
Kvaliteta operates alongside local partners in a particular geographies who are more informed about rules, regulations, business cultures and therefore, have easier access to opportunities.

External consultants or partner consulting teams can be hired, bringing more value proposition in client engagements, customized product demonstrations and pilot implementation.

We are focused on our customers, being their reliable partner.

We approach each community with a partnership attitude, allowing us to strive to be an integral part of our partners' business understanding, not just about the technology - it's about people. We believe that when people are able to utilize the technology that they have access to, the transformation and success begins.





UI

Human-centered design that enable users to learn the system quickly and efficiently.

The UI leverages underlying portal UI for consistent customer experience.

Created with HTML5, CSS3 and Java Script, the interface will be completely responsive on multiple devices for laptops, desktops, mobiles, tablets, kiosks and more.

Gadgets

The KITE Framework provides great support for gadgets, the process application is tightly integrated with gadgets which puts them center of the Enterprise life.

Users are able to select from list of gadgets like Calendar, Tasks, To-Do lists, etc, which are relevant for every day work.

Business Process

BPM Modelling Tools and Model Driven Development approach are used to implement business requirements. Service Agents exchange data and integrate various software elements such as Rules Engine, Business Analytics monitor Process Insight, Audits, Data Stores and Document Repositories.

BPM & BAM solutions are presented within the portal dashboards. They are created to contain key performance indicators (KPIs), providing the user assurance and visibility of activities and performance.

APPS

Apps are modifications to content, appearance, and behavior of Web pages. These can allow improved CMS, Collaboration Tools, advances dashboards, project spaces and more.

Kvaliteta's KITE Framework have pre-built digital solutions that cover industries in Education, Government, Health, Commerce and Agriculture, or customers can develop complete new ones as required.

Data Access

Service Agents encapsulate the business logic and data necessary to represent required data for within applications. With the use of secure database and rights management, information is made available only to those who require or are assigned to access it.

Managing information used by the application as business logic is presented to the Service Agent, thus revealing patterns, trends and associations. The framework can handle both structured & unstructured data, document repositories & other ETL functions.

MDM

Master Data Management comprises of the processes, policies, standards and tools that defines and manages an organization's critical data to provide a single point of reference.

Security

Industry standard, government-grade encryption technologies, advanced algorithms (DES, MD5, RSA), along with customizable Single Sign-On (SSO) that integrates with Yale CAS, JAAS, Active Directory, and more.

KITE provides a fine-grained permissions system, use to implement access security in running portals. KITE follows its standard which ranges from Environmental Security to Content Security to Group & Permission Management.

Integrations

To improve a unified Portal experience, improved collaboration and accessibility. KITE includes the integration with other Line of Business (LOB) applications such as Payment Gateways, ERPs, CMSs, and connection to external devices with Adapters and Web Services.

Government

We believe that e-Governance is not just about one-way service delivery over the Internet or about electronic access to government information or electronic payments.

eServe is a solution designed and crafted such that it changes how the citizens relate to the government as much as it changes how citizens relate to each other.

Automation is the key to e-Governance projects for the days ahead. We are very closely associated with the e-Governance sector, with our operations spanning multiple countries.

The digitalization of operations ensures smoother information flow which provide major advantages to policy making, measuring performance, building consensus by collaboration and feedback, increase revenue, thus truly offering a responsive Government.

Small Business

sBiz is designed to improve the performance of online stores, specifically with the aim of turning more browsers into buyers.

During its development we spent time reviewing the customers' requests, talking to customers and analysing future scope of the solution. The end result is a set of new features that will transform the experience of your online browsers and enable you to increase sales, improve efficiency and enhance customer service.

sBiz includes an range of new features including product filtering, dynamic product options with multishop and pricing, delivery management, automated pagination, enhanced auto-searching, and a brand new ecommerce business solutions that meet customers specific goals and objectives.

Banking

More sophisticated technology means more technologically secure e-banking services are available to enable customer access to accounts, the ability to move their money between different accounts, and making payments or applying for loans via any device, from anywhere.

Using our first digital transformation steps to integrate E-KYC & First mile, your brand will have an enhance image, increase revenues wit overall cost reduction over time, expand easily while having organisational efficiency, and more importantly attracted high value customers while always keeping the "Customer First".

Education

Today's technology environment brings new challenges that inspire innovation and mark true leadership. We understand the challenges and relish the opportunities that technology puts within our reach to communicate, collaborate and create.

It's aim for an alternative to traditional university/college/school prospects, student management software & student data systems. Instead of depending on old student information systems & intranet applications, our software architects have designed a portal solution which gives a modern approach to bring a collaborative environment in the field of education between students, staffs and faculty.

Our solution simplifies, yet advances the integrated student management system. Deploying the iSMS solution into your education organization will do more than just collecting student data – helps to have a better student information systems, admission, enrolment, academics, alumni services, administration, manage classrooms, buildings and eLearning.

Agriculture

E-agriculture is a focus on agriculture, information & communication technologies primarily to improve agricultural development. Improving communication, learning processes and providing faster access to vital information will allow farmers and those involved to make the best decisions and use their resources sustainably to increase their yield and make the most of their time and efforts at the best times.

Farmers need information on current trending cropping techniques for pre-harvest, harvest and post-harvest activities in an integrated and comprehensive platform to assist farmers in making decision.

With enhancement through the internet or related technologies include networks, services and applications, telephones, mobiles, televisions, radio and satellites; our Farm2Fork application will deliver agricultural information and knowledge services directly to farmers, allowing for via smartphones or other mobile devices will prove to be a more streamlined and profitable endeavour.

Health

Kvaliteta's mCare Portal Solution designed for Health organizations which connect hospitals, pharmacies, labs and other health-related services with patients. The mCare Portal solution provides a collaborative environment for patients, doctors, pharmacists and other service providers in the presence of health organizations.

The portal works closely with healthcare professionals, hospitals, health organizations, the government health department and vendors. eMedical records will have the individual or family medical records, treatments and medication, received lab results; all including the complete medical history of the individual or family members, which can be obtained for the future medication. Patients or any consumers can view their or family eMedical records, ePrescription and can also update the Profile Insurance and eHealth Plan Subscription details. also they can review the doctor's profile, hospital/clinic profiles & the details about of the medications that were prescribed.

UWP

Our CiD Framework is created using the flexible Universal Windows Platform. With the UWP app platform for Windows 10, we develop apps that reach all Windows 10 devices – PC, tablet, phone, Xbox, HoloLens, Surface Hub and more. It supports a variety of interaction models and screen sizes, at the core of UWP apps is the idea that users want their experiences to be mobile across ALL their devices, and they want to use whatever device is most convenient or productive for the task at hand.

MVVM Pattern

The framework uses a Model-View-View-Model (MVVM) pattern to cleanly separate the business and presentation logic of your application from its UI. Maintaining this separation helps to address numerous development and design issues which can make your application much easier to test, maintain, and evolve.

It also greatly improves code re-use which allows developers and UI designers to collaborate more easily when working on their respective parts of the application.

Active Directory Integration

Using Active Directory, the administrator will make sure that user-accessible directories are readable and writable by only Authenticated Users, AD group members, and those with permissions. This will help ensure that files created by a single user are readable and modifiable by other AD users. The administrator is free to be as restrictive or as lenient as their security policy dictates.

Audit Trail

The CiD Framework uses a shadow table for each table that exists in the database. This means every time a record is inserted, updated or deleted in a table, the same record is also inserted in the corresponding shadow table. For inserting the record in the shadow table too, we use triggers on the original table that will fire whenever something happens.

Rights Management System

The Rights Management System is used in the framework to provide management and development tools that work with industry security technologies including encryption, certificates & authentication to help organizations create reliable information protection solutions. Through IRM policies, AD RMS allows individuals & administrators to specify access permissions to documents. This prevents unauthorised people from accessing/viewing sensitive information.

Synchronization

CiD's platform uses a powerful metadata model from Microsoft's Sync Framework, to enable peer-to-peer synchronization of file data with support for arbitrary topologies (client/server, full-mesh, P2P), including support for removable media. It enables 3rd parties to build file synchronization and roaming scenarios into their end-to-end synchronization solutions without having to directly interact with the file system.

Sync modes include

- Online
- Limited Connectivity
- Off-Line Mode - Any changes that you made to files while you are offline are synchronized with the original files when you connect again to the network

Distributed Database

The framework uses a lightweight RDBMS to store local data or encrypted data stores.

Future versions will support Distributed Ledgers for Block-Chain based applications.



FACE CAPTURE



FINGER PRINT



ROBOTIC PROCESS AUTOMATION



IRIS



VOICE CAPTURE



SMART PROCESS AUTOMATION



RFID



PASSPORT



ACTIONABLE INTELLIGENCE



DOCUMENT



CUSTOMER COMMUNICATION



NUMBER PLATE



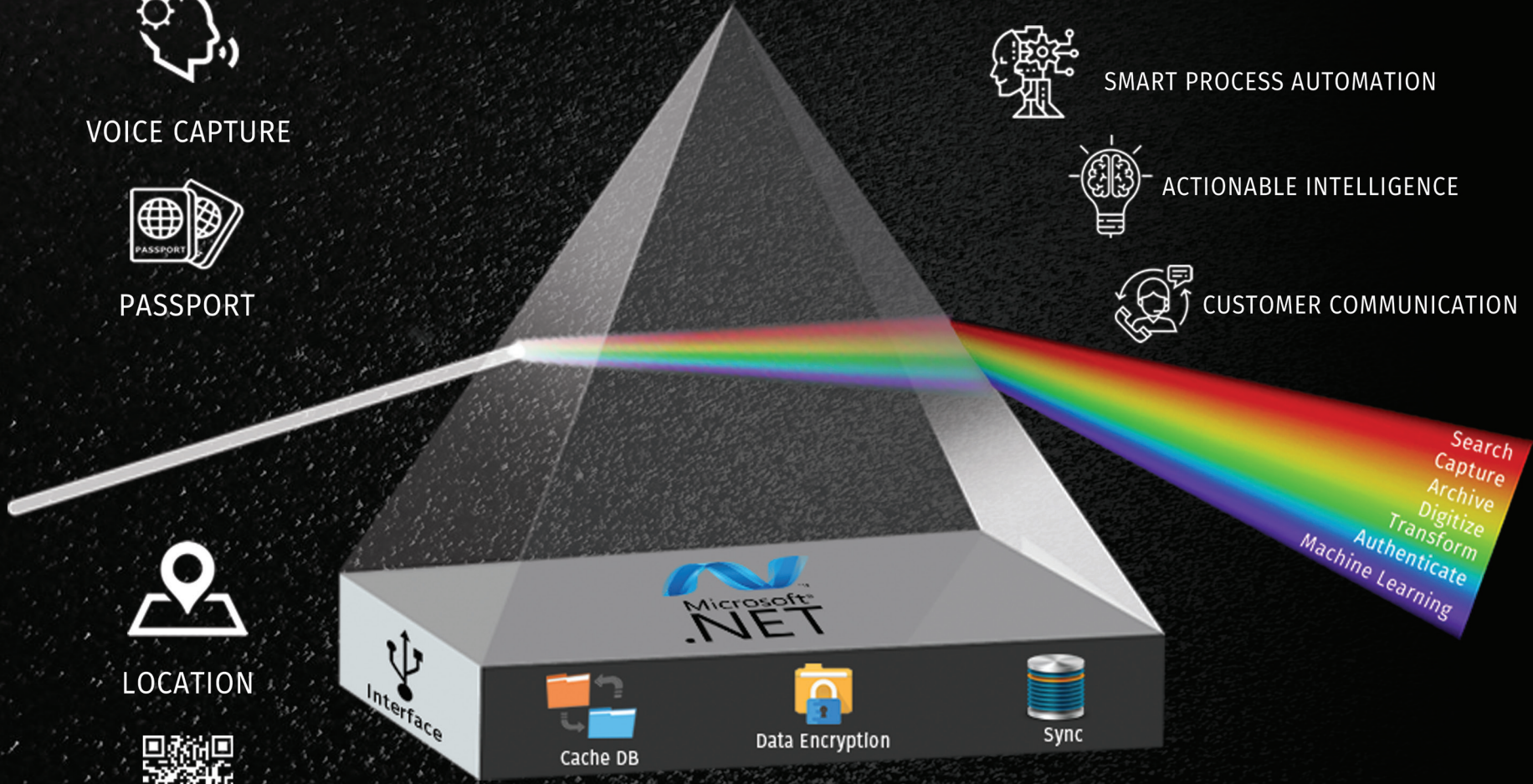
LOCATION



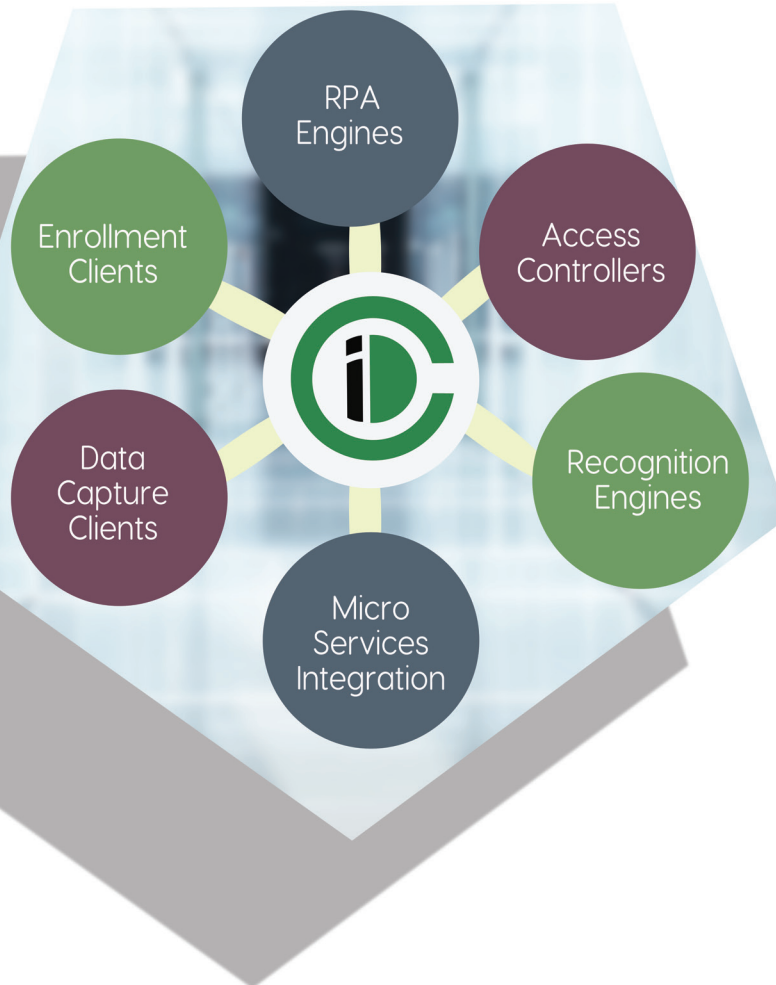
CCTV



QR CODE



Data Capture



Our Data Capture solutions provides the ability and feature set to automate the process of capturing the data from Paper Documents, Biometrics, Photos and Locations, as well as other purposes.

- Document or Enterprise Content Management Systems
- Document Authentication System
- e-KYC
- Smart Process Applications
- Access Control System

The goal of our solution is to reduce the amount of time spent by the customers in the capture process, and produce metadata or templates along with an image file, and/or OCR text. This information is then migrated to a Document Management, Enterprise CMS or e-KYC or any other systems. These systems often provide a search function, allowing search of the assets, based on the produced metadata, templates and then are viewed using clients.

Features

- Barcode Recognition
- Document Type Identification
- Separation
- OCR
- Web-based Viewing
- Web-based Scanning
- Barcode Reading
- Barcode Writer
- Image Manipulation
- OCR/ICR/OMR Transformation
- Fingerprint Recognition & Template Execution
- IRIS Recognition & Template Execution
- Face Recognition & Template Execution
- Location
- Device Management
- Device Integration



Document Authentication

Using the CiD Framework, we have developed our own Document Authentication System. We developed this using the document libraries which already comprises of more than 4000 types of document patterns and format from all over the world.

It will run the following tests on the documents to recognize the type of the document they are:-

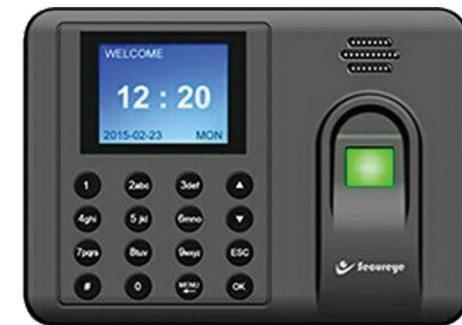
- VIZ Reading
- MRZ Reading
- Thread Detect
- Microprint Test
- Colour Check
- B900 Ink Check
- Security Paper Check
- Optically Variable Inks (OVI)
- Optically Variable Devices
- Document Classification

e-KYC

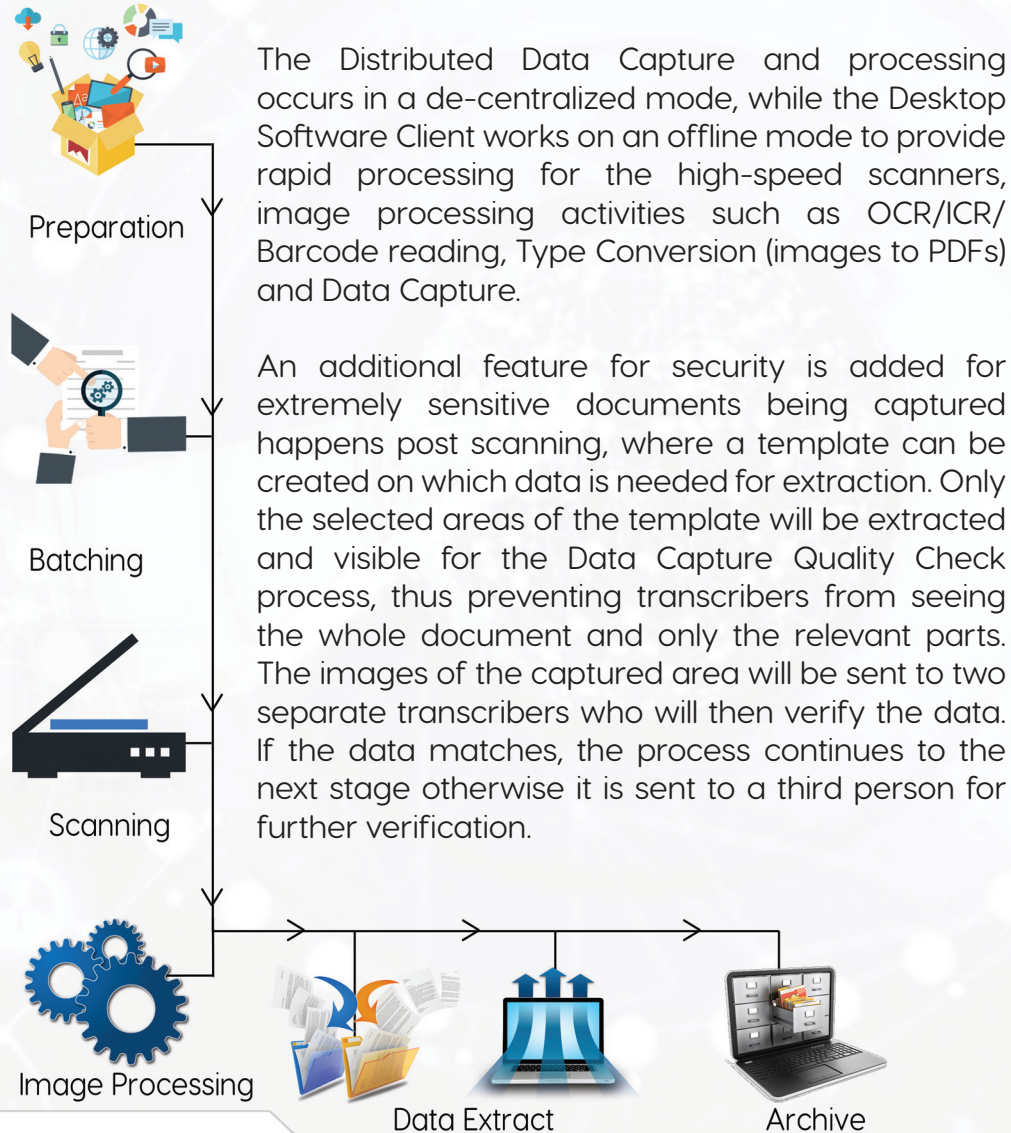
Based on the results of authentication tests, our software offers you an identity check capability combined with image compliance evaluation, according to the requirements set by ISO standards and ICAO (International Civil Aviation Organization) specification. Our software is very effective and very reliable.

This can process the images that comes from Data Capture solutions like IDs and face to identify them.

- Real-time face Detection
- Identity Detection
- Head Pose Deviation
- Quality Assurance
- Detection of closed eye, eyes gaze, red eyes, open mouth, eye glasses and heavy frame glasses
- Multi- threading support



Digitalization



SPA

Smart Process Applications provide a vital link between systems of record such as ERP and ECM, and systems of engagement to help improve the way customers interact with an organization. We guide businesses to empower employees with tools to manage IT, continuously deliver processes that occur in the frontline, and those that want to deploy a modern interface to LOBs or migrate to engagement centric applications from record centric applications.

- Flexibility of data integration services
- Insightful analytic and business intelligence
- Mobile service versatility
- Simplified licensing and pricing



RPA

We can use Robotic Business Automation to mechanize business rules and repetitive human actions to perform autonomous execution of a combination of processes, activities, transactions, and tasks in one or more unrelated software systems to deliver a result or service with human exception management.

Benefits:

- Optimise resource use & aim for cost-effectiveness
- Introduce adaptability and flexibility to processes
- Empower the workforce Improve communication Employee satisfaction
- GUI enabling easy RPA Implementation



SMART PROCESS APPLICATION

ROBOTIC PROCESS

Smart ID

Smart ID using barcodes, matrix codes, Smart Chip IDs, RFID tags or others, makes it easier for customers to manage their identity by reducing the number of places they need to maintain it, and simplifying accessibility.

For organizations, Smart IDs provides a platform for efficiently receiving & verifying customer information, and for staying current.

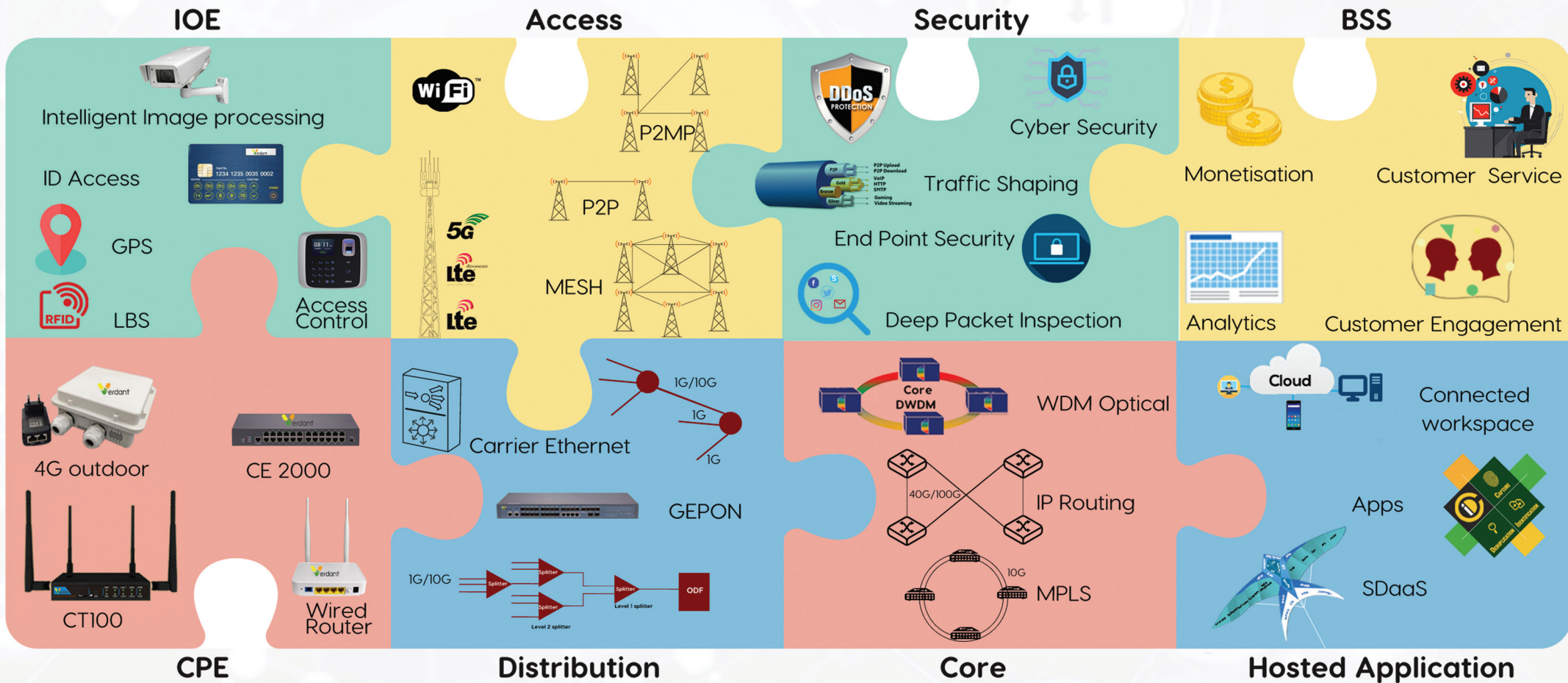
Uses:

- e-KYC Applications
- Visitor Tracking, Delivery Tracking,
- Intelligent Access
- Health Card, School/Campus ID, e-Wallets, Loyalty Cards



DIGITAL PLATFORM SERVICES

AGILE



Our Service Provider IT (SP-IT) team offers an array of services - integrated voice, video, data, mobile, and cloud services for Communication Service Providers.

Our objective is to be a transformation partner for wired/wireless Network Operators, Internet Service Providers (ISPs), Government Core Networks, Campus Networks and Mobile Private Networks in Africa and Middle East.

Core

- WDM System for Backbone & Metro Core networks to cater to the ever increasing demand of bandwidth, supports line rate of 40Gbps and 100Gbps
- Includes Layer 2 feature sets for aggregation network

Access

- **High Throughput Satellites (HTS)** - KA Band Satellite backhaul & Internet Broadband offering. Available capacity – 10Gbps
- **Last mile & Rural Connectivity** using PTP/ PTMP Radio links for Backhaul network and using 4G LTE (or) 5G for end user services & Wi-Fi hotspots on LTE

Distribution

- A new generation “Verdant” Carrier-Class Ethernet switch oriented for MPLS & service provider access networks
- GEAPON Products for FTTH/FTTB Applications– 1G/10G OLT, Commercial Gigabit ONU, Home Gateway and Multi Dwelling Unit
- Our Verdant range of switches delivers a consistent wired / wireless user experience and it provides Layer3 feature sets which do not require any licensing

Security

- DPI-based Application Level visibility, control & security
- DDoS/ Bot Protection, Web Filtering & Network- based Anti-Virus/Anti-Malware for Cyber & End point security

Business Support System

- DPI CDR's for monetisation, On-Line and Off-Line Charging, AAA Integration, Value-Added Services, Analytics, Customer Service & Engagement

CPE & Internet of Things

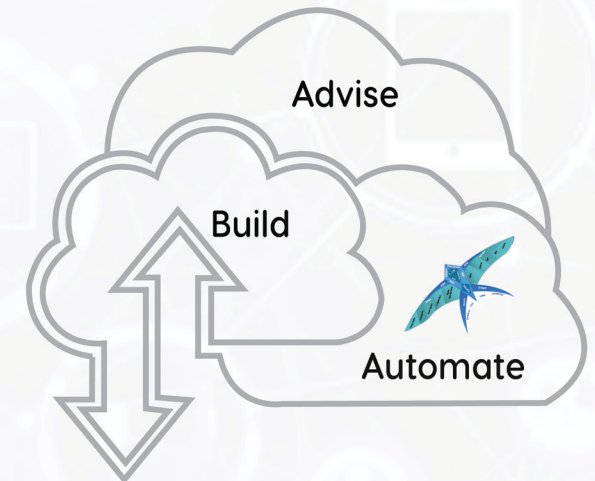
- 4G outdoor solutions for Large home & School connectivity
- Integrated VOIP gateway with PBX for Voice/Data service
- Intelligent Access CPE with Edge Computing
- Fully Managed Networking Solution Services that are meaningful for Education includes Deep Packet Inspection with Security, Wireless, Content Delivery
- Intelligent Image Processing for Authentication & Tracking, ID Access for Classification and Extraction, GPS-based location tracking and IRIS/IFID for access control

Hosted Applications

- Our SDaaS framework (KITE & CID) offers service providers to develop captive portals - e-KYC, e-Services offering for digital commerce, Governance, ID Tracking & management systems for Education and Health

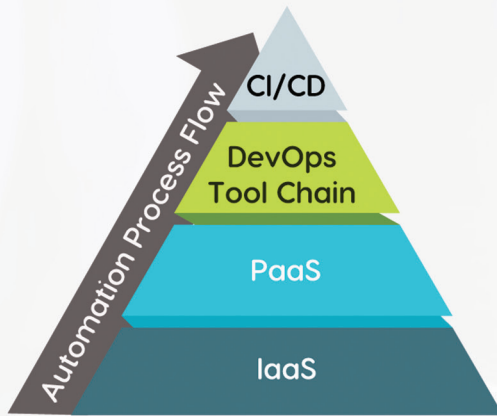
Kvaliteta offers Full Stack IT Infrastructure Solutions - “Edge Computing to Cloud”.

Kvaliteta provides the right combination of people, processes, systems, and technology across on-premise, cloud, the network, and security to maximize the value of your IT infrastructure and operations while simplifying the management of your hybrid IT environment. Kvaliteta is a value-added provider of solutions for OPDC, Collaboration Virtualization, Private/Public Clouds Systems & Network Management and Monitoring Platforms.



Our approach enables Enterprises to strategise, re-engineer, move and operate their business critical applications on cloud with Multicloud, Private or in a Hybrid setup.

Our services include: Cloud Assessment, Migration, Framework for building cloud native apps, Integration, Predictive Analysis, Incident Response Alert Correlation and Cloud Security. Our Analytical Tools, AI/ML Automation and DevOps Tool Chain support Public, Private, Multi & Hybrid Cloud.



Site Reliability Engineering

Site Reliability Engineering solution provides a container architecture by combining virtualization and containers.

Containers are foundation for cloud native applications.

- DevOps Ready
- Cloud Ready

Our Automation Tools provide a consistent CI/CD Environment, with on-demand provision management, Self-service and fully Automated Application life cycle.

Customers can leverage on our KITE Framework for building Cloud native Apps with improved Quality, Reduced Risk, Fully Responsive, Scalable & Fault Tolerance applications for Private, Public or Multicloud.

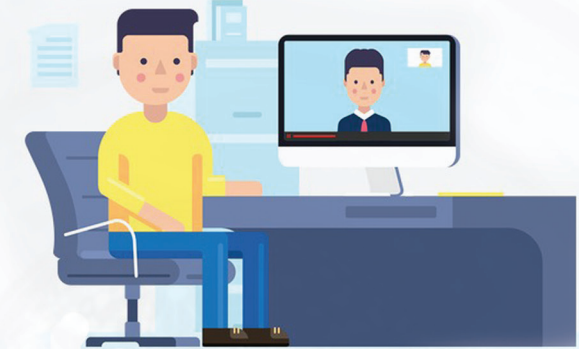
Our SDaaS can efficiently deliver Business Application Integration, Data Connection between systems, Smart Process Applications and Robotic Process Automation.



Orchestration and Automation

We deliver a clear and accurate insight into the effective utilization of resource in a data centre or cloud by providing a platform that enables users the ability to monitor, control and analyse resource utilization in real-time.

- Monitoring
- Performance Management
- Site Capacity Planning
- Inventory Manager
- Vendor Monitoring Tools



Connected Workspace

People can achieve extraordinary things by working together. We have expertise in providing reliable, cost-effective and client-centric communication and collaboration software solutions.

- Start your journey to Digital Services
- Work nearly anywhere, anytime
- Implement single point of access to key business information
- Locate your people & resources quickly
- Deliver targeted content and knowledge to your teams



India :

Kvaliteta Systems and Solutions,
Yamuna Building ,Techno park,
Trivandrum, Kerala, India

Middle East :

Kvaliteta Systems and Solutions FZC
FDRK1741, Al Jazirah Al Hamra RAK
Economic Zone, P.O. Box 17191, UAE

Singapore :

Kvaliteta Systems and Solutions Pte Ltd
9 Simei Street 4 #04-08
Singapore 529865